



RBC Wealth Management
Ralph W. Zelenock
Financial Consultant
1302 Judson Rd
Longview, TX 75601-3916
(p) (903) 753-5343
(f) (903) 295-5718
ralph.zelenock@rbcdain.com

In this issue:

Year-End Tax
Planning--Special Concerns
for 2010

Buy Term and Invest the
Difference Isn't Always the
Best Strategy

Transferring Your Family
Business to Your Children

Will the new health-care law
affect my Medicare drug plan?



RBC Wealth Management*

a division of RBC Capital Markets Corporation, Member NYSE/FINRA/SIPC.

Wealth Monitor

August 2010

Year-End Tax Planning--Special Concerns for 2010



Year-end tax planning is as much about 2011 as it is about 2010. Often, there's a real opportunity for year-end tax savings when you can predict that you'll be paying taxes at a lower rate in one year than in the other. For example, under the right circumstances, deferring a year-end bonus or potentially accelerating deductions into the current year can pay off in a big way. Of course, to effectively plan, it helps to have a good idea of what next year's tax rates will be. Unfortunately, as 2010 draws to a close, 2011 brings some uncertainty in that regard.

Will there be higher tax rates in 2011?

Currently, there are six marginal federal income tax brackets: 10%, 15%, 25%, 28%, 33%, and 35%. These brackets--the result of 2001 tax legislation--expire at the end of 2010. As things stand now, in 2011 the 10% bracket disappears, and the remaining brackets return to their pre-2001 levels: 15%, 28%, 31%, 36%, and 39.6%. Though it would take action by Congress, the president has indicated that he would like to permanently extend the 2010 rates for individuals earning less than \$200,000 and married couples earning less than \$250,000 (these dollar benchmarks would be reduced by an amount that reflected the standard deduction and exemption amounts), but allow the two highest brackets to return to 36% and 39.6% for higher earners.

What about long-term capital gains?

Currently, long-term capital gain is generally taxed at a maximum rate of 15%. If you're in the 10% or 15% marginal income tax bracket in 2010, though, a special 0% rate applies (in other words, you owe no tax on any long-term capital gain). The same rates apply to qualified dividends received in 2010.

These rates also expire at the end of the year. The maximum rate on long-term capital gain in 2011 will generally increase to 20%, with a 10% rate applying to individuals in the lowest tax bracket (special rules would apply to qualifying

property held for five years or more). Qualifying dividends will be taxed as ordinary income. The president has proposed to permanently extend the 0% and 15% rates, with a new 20% rate applying to high-income individuals (those in the 36% and 39.6% tax brackets). Again, though, that all depends on what Congress does in the next few months.

Other considerations

- **2010 Roth IRA conversions:** A special rule applies to Roth IRA conversions in 2010 that allows you to postpone paying federal income tax on the income that results from the conversion. Instead of including the taxable income that results from the conversion on your 2010 federal income tax return (still an option if you so choose), you can report half the income on your 2011 return and half on your 2012 return. Whether a Roth conversion makes sense for you depends on your individual circumstances, including your marginal income tax rate in 2011 and 2012.
- **Alternative minimum tax (AMT):** In a now-familiar pattern, legislation that temporarily increased AMT exemption amounts, forestalling a dramatic increase in the number of individuals ensnared by the tax expired at the end of 2009. Congress is likely to act, but the specifics are uncertain.
- **Required minimum distributions (RMDs):** The requirement to take minimum distributions from IRAs and defined contribution plans was temporarily suspended for 2009; minimum distribution requirements are once again in effect for 2010.
- **Pending legislation:** Legislation is pending to extend some popular provisions that had expired, including the ability to deduct state and local sales tax in lieu of income tax on Schedule A, the additional standard deduction for state and local real property tax, and the above-the-line deduction for qualified tuition and related expenses. And additional legislation is likely, too, so stay up-to-date.

Buy Term and Invest the Difference Isn't Always the Best Strategy

When it comes to life insurance, we've all heard the debate over whether to buy cash value life insurance, or buy term insurance and invest the difference. While cash value life insurance provides a cash accumulation account, it typically costs a great deal more than a similar amount of term insurance. The "buy term and invest the difference" strategy involves using the amount you'd spend on cash value life insurance to buy a less expensive term policy for the same death benefit and investing the difference on your own.

Why "buy term and invest the difference"?

There are several reasons proponents consider this strategy instead of cash value life insurance:

- Your need for life insurance protection is often temporary (e.g., replacing income during working years, paying off a mortgage or other debt), so there may be no need for permanent cash value life insurance
- You have a greater variety of investment options to better meet your risk tolerance and savings goals
- By selecting your own investments, you have the potential of earning greater returns than may be provided by cash value life insurance
- You may have greater access to your savings, depending on the types of investment vehicles you choose
- You may be able to invest within tax-advantaged accounts such as IRAs, Roth IRAs, and tax-deferred annuities

Why cash value might be the better choice

Is your life insurance need permanent? Your need for life insurance may not be temporary. For example, you may want to leave a monetary gift to children or grandchildren, provide estate liquidity for taxes and other expenses including memorial and burial costs, or make a charitable bequest. You could use your savings to meet these goals, but what if you haven't accumulated enough? You may not be able to meet your financial goals at death, or you could fail to secure your surviving family members' financial future.

Will your term policy keep up with inflation?

Most term policies are purchased for a specific period of time, such as 20 years. Generally, the death benefit remains level for the entire term. However, rising inflation may actually eat

away at your death benefit, diminishing its value over time. Most cash value life insurance affords the opportunity to increase the death benefit in the future. For example, dividends from whole life insurance can be used to buy more death benefit (though dividends are not guaranteed), and some universal life policies allow excess cash accumulations to increase the death benefit.

How much savings will you have? Depending on your investment choices, you may not know how much your savings will be worth at a given point in the future. Recent stock market downturns exemplify how quickly portfolios and investment accounts can be reduced. If you haven't accumulated the amount of savings you anticipated and your term life insurance runs out, you may be forced to continue your term coverage. But your premium cost for term can increase significantly, simply because you're older. And if your health has deteriorated, it may cost you substantially more to renew your coverage, or you might not qualify for coverage at any price. Even if your policy is guaranteed renewable (i.e., the company has to renew your coverage regardless of your health), your premiums can still increase if the insurer does so for the entire class of policyholders, including you.

The advantage of many cash value policies is that you can usually predict the policy's death benefit and cash value throughout the life of the contract. Most cash value policies have a minimum or guaranteed death benefit that will remain in effect as long as premiums are paid (subject to the claims-paying ability of the insurer). And your premiums typically won't increase under any circumstances. Also, many types of cash value policies pay a minimum interest on the cash accumulation account. And some whole life policies may even pay a dividend that can be added to your cash value.

Will you invest the difference? If the buy term and invest the difference strategy is going to work, you have to "invest the difference." If you don't have the discipline to follow the course, you probably won't reach your accumulation goal. Cash value life insurance offers "forced savings," so it may be a good choice for individuals who are unable to save on their own.



In many states, the cash value of a life insurance policy is protected, at least in part, from claims of your creditors, providing a potential asset protection advantage over some other investment vehicles.



Transferring Your Family Business to Your Children

You've spent years building your family business. It's been a source of pride and income for both you and your family. But now you may be thinking about how to hand over the reins to your children. Because transferring your business interest to your children may have income, gift, and estate tax consequences, it can take careful planning to prevent some (or all) of the business assets from having to be sold to pay those taxes. Your business succession planning should include ways to ensure the continuity of your business with the smallest possible tax consequences.

Some common strategies for minimizing taxes are discussed briefly below, but remember, none of these strategies are without drawbacks. Before you act, consult a tax professional as well as your estate planning attorney.

Gifts or bequeathing your interest outright

If you don't need continued income from the business and you don't want to retain some control, you can simply give the business to your children outright. To minimize the gift tax consequences, you can first use your \$1 million lifetime exemption. Then, you can begin a systematic program of making annual gifts to your children in amounts that equal the annual gift tax exclusion (currently \$13,000 per year per recipient). By transferring your interest in this manner, you may be able to transfer all or a significant portion of the business free from federal gift tax (although these transfers may still be subject to state gift tax). The disadvantage here is the amount of time that may be needed to transfer your entire interest.

If you can wait and transfer your business at your death, Section 6166 of the Internal Revenue Code allows any estate taxes incurred because of the inclusion of your family business in your estate to be deferred for 5 years (with interest-only payments for the first 4 years and interest plus principal due in the fifth year), and then paid in annual installments over a period of up to 10 years. This will allow your beneficiaries more time to raise sufficient funds to pay the taxes or obtain more favorable interest rates if they need to borrow the money. Be aware that the business must exceed 35% of your gross estate and other requirements must be met.

Selling your interest outright

If you need income from your business, you can sell your business interest (for full fair market value) to your children. This will avoid gift and estate taxes, but you may owe capital gains taxes. Long-term capital gains tax rates,

however, are currently lower than gift and estate tax rates.

Using a buy-sell agreement

If you want to sell your business interest to your children but retain control over the business for a while, consider using a buy-sell agreement. This is a legal contract that prearranges the sale to happen when a specific event occurs, such as your retirement, disability, divorce, or death. When the triggering event occurs, the children will be obligated to buy your interest from you or your estate. The price and sale terms will have been predetermined.

Remember, however, that you will be bound under a buy-sell agreement: you won't be able to sell or give your business to anyone except the buyers named in the agreement (unless they consent).

Using a grantor retained annuity trust (GRAT)

A GRAT is a trust into which you would transfer your business interest. The value of the gift is determined using the IRS's current interest rate (published monthly by the IRS). The trust must terminate at a specified time (e.g., 10 years). You receive annuity payments during the term of the trust, and at the end, your children will receive the business. Hopefully, the business will have appreciated beyond the IRS's interest rate, allowing the excess to pass tax free. Be aware however, that if you die during the GRAT term, your entire business interest will be included in your gross estate for federal estate tax purposes. You will have failed to transfer your business interest and lost the tax advantages of the GRAT, and you will have incurred the costs of creating and maintaining the GRAT for nothing, so structure your GRAT carefully.

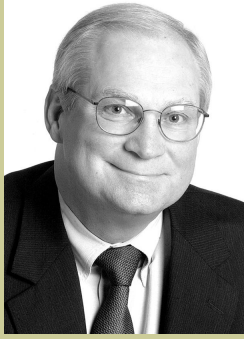
Creating a family limited partnership (FLP)

An FLP is a type of business entity. First, you establish a partnership with both general and limited partnership interests. Then, you transfer the business to this partnership. You retain the general partnership interest for yourself, allowing you to maintain control over the day-to-day operation of the business. Over time, you gift the limited partnership interests to your children, leveraging your lifetime gift tax exemption and the annual gift tax exclusion. You also save taxes because the value of the gifts may be eligible for valuation discounts, such as the minority interest and lack of marketability discounts.



With a GRAT, you receive a fixed dollar amount that does not change even if the value of the trust property (corpus) increases or decreases. You may, alternatively, retain the right to receive a fixed percentage of the trust corpus, determined annually. That type of trust is called a grantor retained unitrust (GRUT).

A rolling or cascading GRAT is a technique that involves creating a series of short-term GRATs (typically two or three years) with each successive GRAT being funded by the annuity payments from the previous ones. This technique can minimize the risk of the grantor dying during the GRAT term, and can also minimize interest rate risk.



RBC Wealth Management
 Ralph W. Zelenock
 Financial Consultant
 1302 Judson Rd
 Longview, TX 75601-3916
 (p) (903) 753-5343
 (f) (903) 295-5718
 ralph.zelenock@rbcdain.com

The information contained herein is based on sources believed to be reliable, but its accuracy cannot be guaranteed. Professional Trustee Services are offered to RBC Wealth Management clients by different entities who may serve as trustee. RBC Wealth Management will receive compensation in connection with offering these services. Neither RBC Wealth Management nor its Financial Consultants are able to serve as trustee. RBC Wealth Management does not provide tax or legal advice. All decisions regarding the tax or legal implications of your investments should be made in connection with your tax or legal advisor. RBC Wealth Management is not a mortgage lender or broker. Nothing herein should be construed as an offer or commitment to lend. Any calculations are provided as educational tools, and are not intended to provide investment advice or serve as a financial plan. The result of any calculation performed is hypothetical and does not assume the effect of fees, commissions, tax rates, or changes in interest rates or the rate of inflation, and is not intended to predict or guarantee the actual results of any investment product or strategy. These results depend wholly upon the information provided by you and the assumptions utilized within. In selecting an anticipated investment return, you should consider factors affecting the potential return, such as investment objectives and risk tolerance. The articles and opinions in this advertisement, prepared by Forefield, are for general information only and are not intended to provide specific advice or recommendations for any individual.

RBC Wealth Management, a division of RBC Capital Markets Corporation, Member NYSE/FINRA/SIPC.

Prepared by Forefield Inc,
 Copyright 2010

Ask the Experts



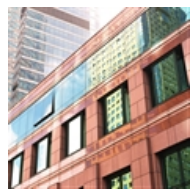
Will the new health-care law affect my Medicare drug plan?

Yes, it might. Many Medicare Part D beneficiaries have had to pay for prescriptions out-of-pocket after reaching a gap in their annual coverage, referred to as the "donut hole." Currently, if you're a Medicare Part D beneficiary, you may pay up to an additional \$3,610, out-of-pocket, for medicines after reaching an initial threshold of \$2,830 in total prescription drug costs (including Part D payments, beneficiary co-pays, and deductibles). But, in 2010, if you fall in the coverage gap, you will receive a \$250 rebate.

Starting in 2011, you will receive a 50% discount on the cost of brand-name drugs in the coverage gap. Additionally, a reduction in coinsurance for generic drugs in the coverage gap will be phased in, starting in 2011, and a similar reduction in coinsurance for brand-name drugs begins in 2013. By 2020, a combination of federal subsidies and a reduction in co-payments will reduce your total out-of-pocket costs for medications in the donut hole to 25%.

Another change affecting Medicare Part D beneficiaries relates to full-benefit dual-eligible beneficiaries (individuals eligible for both Medicaid and Medicare). Dual-eligible beneficiaries receiving institutional care, such as in a nursing home facility, do not owe any co-payments for prescriptions covered by Part D. However, dual-eligible beneficiaries receiving long-term care services at home or in a day-care community setting are subject to such co-payments. Beginning in 2012, the new legislation removes this imbalance; individuals receiving services at home or in a community setting will no longer be subject to co-payments.

Also, beginning in 2011, the time period during which Part D and Medicare Advantage beneficiaries can make changes to their coverage is extended and runs from October 15 through December 7. This extension should provide more time for beneficiaries to consider their options while ensuring that any benefit changes are properly incorporated into the plan for the following year.



Does the new health-care reform law affect health spending accounts?

Yes. The new health-care reform legislation impacts flexible spending arrangements (FSAs), health reimbursement arrangements (HRAs), health savings accounts (HSAs), and Archer medical savings accounts (MSAs).

Over-the-counter medications. Beginning in 2011, FSAs and HRAs will not be able to make reimbursements for the cost of over-the-counter medications, and HSA and Archer MSA distributions used to pay for the cost of over-the-counter medications will not be made on a tax-free basis. However, insulin and over-the-counter medications prescribed by a physician will still be reimbursable on a tax-favored basis by these plans. You may want to stock up on your over-the-counter drugs to take advantage of the available reimbursement before the end of this year.

Tax increase on nonqualified distributions. Generally, distributions from HSAs and Archer MSAs for qualified medical expenses are received income-tax free. Plan distributions

for other than qualified medical expenses are subject to ordinary income tax plus a penalty tax. In the case of HSAs, the penalty is 10%, and for Archer MSAs the penalty is 15%. However, the health-care reform legislation increases the tax penalty for both of these plans to 20%, beginning in 2011.

FSA contribution limit. If you participate in an FSA as part of a cafeteria plan, beginning in 2013, the annual amount available for reimbursement for qualified medical expenses is limited to \$2,500 (this figure will be adjusted for inflation in subsequent years). This reduction does not apply to health FSAs that aren't part of a cafeteria plan.

If these changes will affect you, and you or a family member needs substantial dental work such as orthodontia, or corrective vision surgery, you might want to plan for and address these needs prior to 2013. And remember, FSAs are subject to the "use it or lose it" rule, meaning that any pretax money in your plan that is not used by the end of the plan year is forfeited.



RBC Wealth Management

a division of RBC Capital Markets Corporation, Member NYSE/FINRA/SIPC.